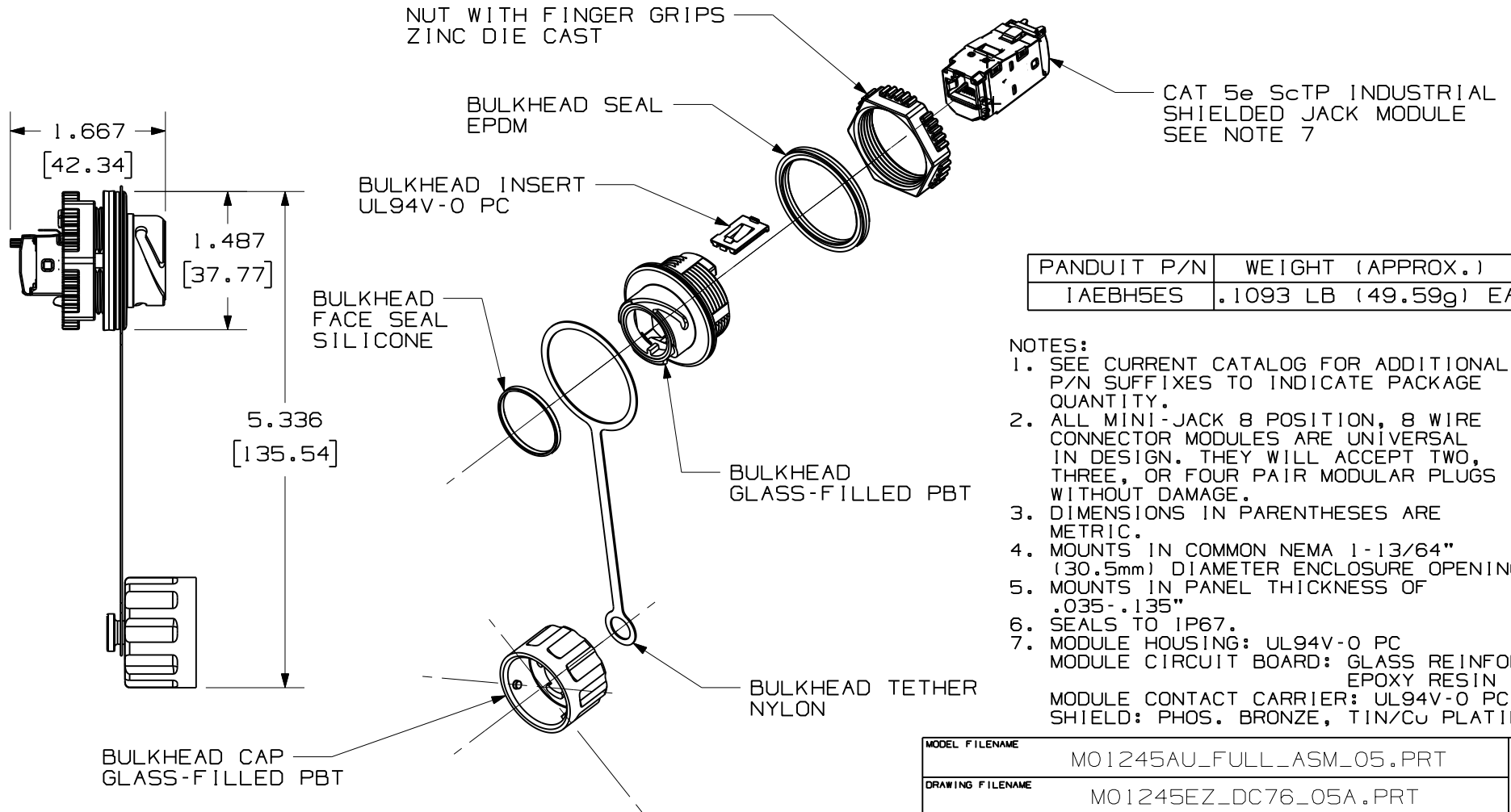


THIS COPY IS PROVIDED ON A RESTRICTED BASIS AND IS NOT TO BE USED IN ANY WAY DETRIMENTAL TO THE INTERESTS OF PANDUIT CORP.



PANDUIT P/N	WEIGHT (APPROX.)
1AEBH5ES	.1093 LB (49.59g) EA

NOTES:

1. SEE CURRENT CATALOG FOR ADDITIONAL P/N SUFFIXES TO INDICATE PACKAGE QUANTITY.
2. ALL MINI-JACK 8 POSITION, 8 WIRE CONNECTOR MODULES ARE UNIVERSAL IN DESIGN. THEY WILL ACCEPT TWO, THREE, OR FOUR PAIR MODULAR PLUGS WITHOUT DAMAGE.
3. DIMENSIONS IN PARENTHESES ARE METRIC.
4. MOUNTS IN COMMON NEMA 1-13/64" (30.5mm) DIAMETER ENCLOSURE OPENING.
5. MOUNTS IN PANEL THICKNESS OF .035-.135"
6. SEALS TO IP67.
7. MODULE HOUSING: UL94V-0 PC
MODULE CIRCUIT BOARD: GLASS REINFORCED EPOXY RESIN
MODULE CONTACT CARRIER: UL94V-0 PC
SHIELD: PHOS. BRONZE, TIN/CU PLATING

MODEL FILENAME	MO1245AU_FULL_ASM_05.PRT	I.I. NUMBER	A
DRAWING FILENAME	MO1245EZ_DC76_05A.PRT		

INDUSTRIALNET TX5e CONNECTOR SHIELDED JACK MODULE WITH BULKHEAD CUSTOMER DRAWING

<p>PANDUITTM CORP. TINLEY PARK, ILL 60477</p>	ALL DIMENSIONS ARE GIVEN IN INCHES, UNLESS OTHERWISE SPECIFIED.	WORK INSTRUCTION
	<p>DIMENSIONAL TOLERANCES ARE:</p> <p>(.X) ± (.XXX) ±.010(.25)</p> <p>(.XX) ±.03(.8) ANGLES ±</p>	SCALE
<p>THIRD ANGLE PROJECTION</p>		NONE
<p>DRAWN BY: BJN</p>	REVIEW DRAWING NUMBERS	PART NO.
<p>DATE: 10-30-06</p>		SEE CHART
<p>CHK'D: CEF</p>		DRAWING NO.
		01245-76

REV	DATE	BY	CHK	DESCRIPTION	ECN	R	CUST	SUP	OTH
2	3-19-08	BJN	RJDU	D. REDRAWN, REVISED, RENAMED TO EZ, ADDED MATERIALS & WEIGHT	01245-76		VMB		
1	11-15-07	BJN	EJH	C. REMVD TM FROM DWG DESCRIPTION B. ADDED MATERIAL DESCRIPTIONS A. UPDATED MODEL TO REV 05	01245-76		VMB		
R	10-30-06	BJN	CEF	RELEASED TO PRODUCTION	01245-76		CEF		